



RedRock Custom Carpets Inc.

On the Fly



Atelier

Contemporary design featuring vertical and horizontal variations.

- Fiber: 100% Pure Wool
- Width: 3' - 15' wide
- Pattern Repeat: 27" (W) x 45" (L)



Dark Gray 10925



Beige 29004



Taupe 13092

(12"x15" shown)

Cadence

Cut & loop striations in a modern horizontal design.

- Fiber: 100% Pure Wool
- Width: 3' - 15' wide
- Pattern Repeat: 35" (W) x 13" (L)



Dark Gray 10925



Beige 29004



Taupe 13092

(12"x15" shown)

Canvas



Taupe 13092

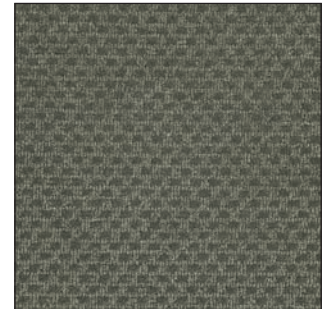
(12"x15" shown)

A tailored small-scale pattern providing consistent design rhythm.

- Fiber: 100% Pure Wool
- Width: 3' - 15' wide
- Pattern Repeat: 1" (W) x 1" (L)



Beige 29004



Dark Grey 10925

Crossweave



Mink 201

(12"x15" shown)

Cut & loop texture in a bold geometric design.

- Fiber: 100% Pure Wool
- Width: 3' - 15' wide
- Pattern Repeat: 15" (W) x 25" (L)



Fawn 120



Vision 255

Fortune

A refined loop tip-shear using New Zealand wool with sateen highlights in a stylish tonality.

- Fiber: Pure Wool and Sateen
- Width: 3' - 15' wide
- Pattern Repeat: No Repeat / Continuous



Dark Gray 1762538



Beige 4023923



Taupe 2132163

(12"x15" shown)

Hyland

Cut & loop in a variegated block-weave design.

- Fiber: 100% Pure Wool
- Width: 3' - 15' wide
- Pattern Repeat: 38" (W) x 50" (L)



Dark Gray 10925



Beige 29004



Taupe 13092

(12"x15" shown)

Inspire

Textural loop grid using New Zealand wool with sateen highlights creating a refined structure and performance density.

- Fiber: Pure Wool and Sateen
- Width: 3' - 15' wide
- Pattern Repeat: 0.500" (W) x 0.500" (L)

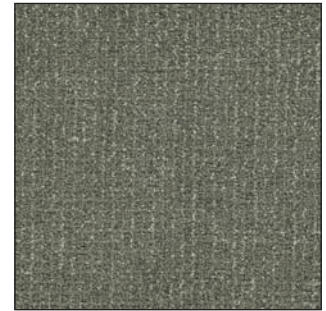


Taupe 13038

(12"x15" shown)



Dark Suede 04230



Dark Grey 10388

Mini Chevron

Cut & loop repeating chevron pattern offering both color and design rhythm.

- Fiber: 100% Pure Wool
- Width: 3' - 15' wide
- Pattern Repeat: 1.50" (W) x 1.25" (L)



Mink 201

(12"x15" shown)



Fawn 120



Vision 255

Paragon

Classic cut & loop design in a tonal tapestry style.

- Fiber: 100% Pure Wool
- Width: 3' - 15' wide
- Pattern Repeat: 8" (W) x 19" (L)



Musket 204



Dormer 229



Taupe 130

(12"x15" shown)

Slate

Hallmark cut & loop cross-grid in a plush and refined texture.

- Fiber: 100% Pure Wool
- Width: 3' - 15' wide
- Pattern Repeat: 0.563" (W) x 0.563" (L)



Charcoal 27301



Vision 25110



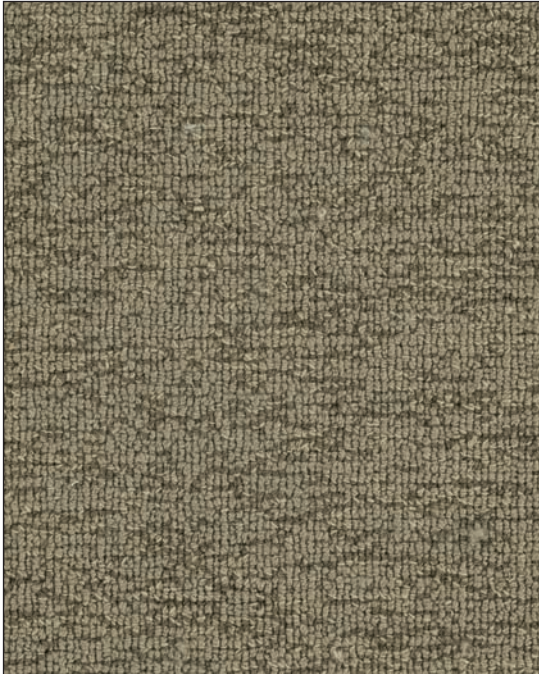
Dormer 22913

(12"x15" shown)

Sonata Striae

Precision loop striae using tonal shades of pure wool yarns.

- Fiber: 100% Pure Wool
- Width: 3' - 15' wide
- Pattern Repeat: No Repeat / Continuous



Taupe 132192

(12"x15" shown)



Dark Suede 042192



Dark Grey 017625

Windstream

Cut & loop using pure wool in a flowing contemporary vertical design.

- Fiber: 100% Pure Wool
- Width: 3' - 15' wide
- Pattern Repeat: 28" (W) x 75" (L)



Mink 201

(12"x15" shown)



Fawn 120



Vision 255

On the Fly

- RedRock Custom Carpets' *On the Fly* program is our commitment to manufacture and ship any of the 36 design and color variations in this catalog within 7-10 business days of your submitted purchase order.
- RedRock pledges to maintain an adequate supply of *On the Fly* production samples so we can respond quickly to your sample requests.
- *On the Fly* designs can be produced in any of our 64 standard pom-chain colors. We can also custom match colors to your exacting requirements. For colorways not listed in this program catalog, our delivery commitment is 10-20 business days.

Please call to discuss how we can be of service.



Flammability: FAR 25.853(a); DOC-FF1-70 Pill Test

770.949.5676
770-825-2116 (cell)
2772 Winston Industrial Parkway
Winston, Georgia 30187
service@redrockcarpet.com



RedRockCarpet.com

2017 VI